

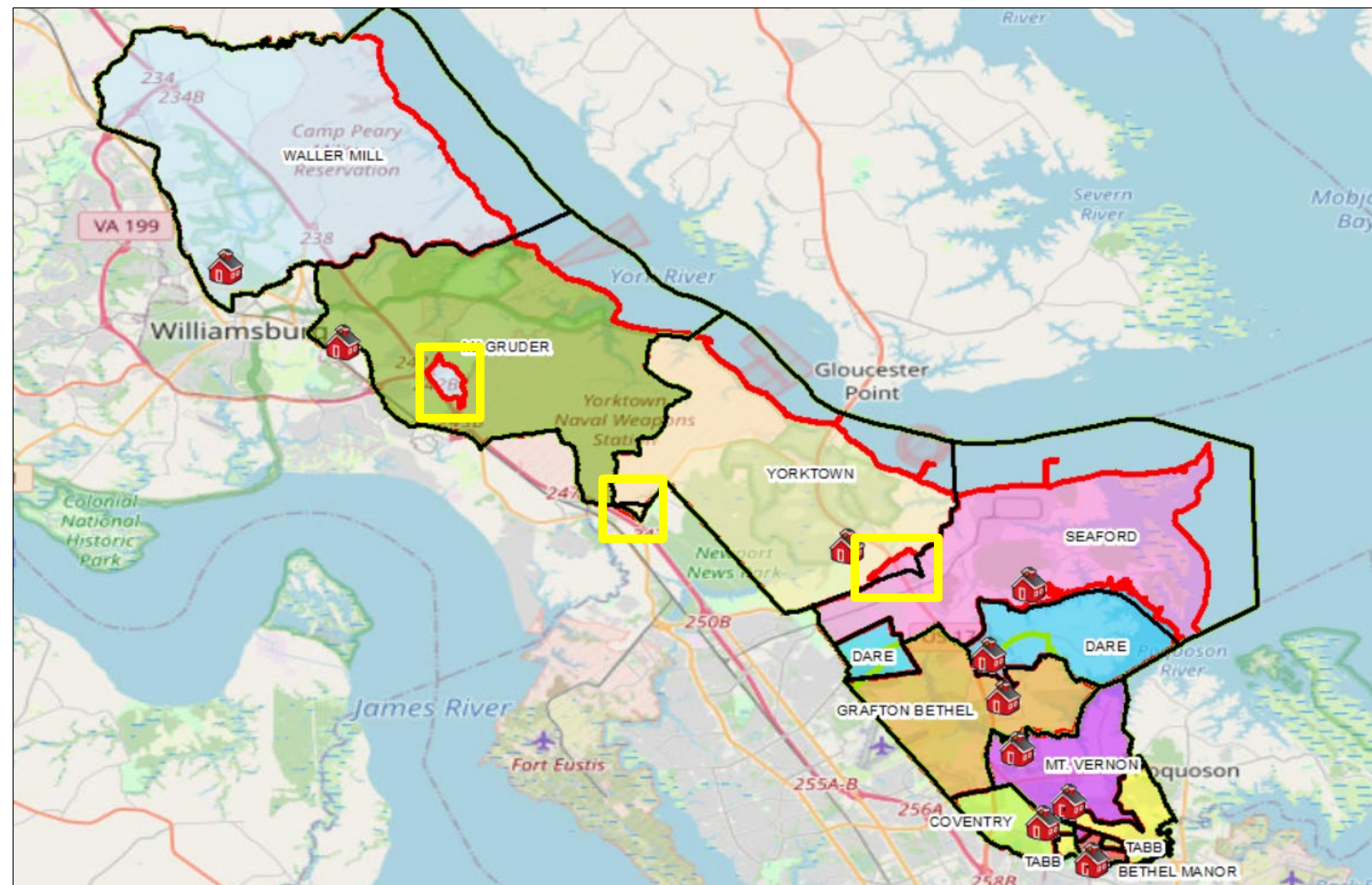


York County Public Schools Revised Plan E as approved by the School Board on 3-25-24

3-27-24



Revised Plan E as approved by the School Board on 3-25-24 for 2024-2025 School Year



Changes made to upper County schools

- Magruder ES
- Seaford ES
- Waller Mill ES
- Yorktown ES

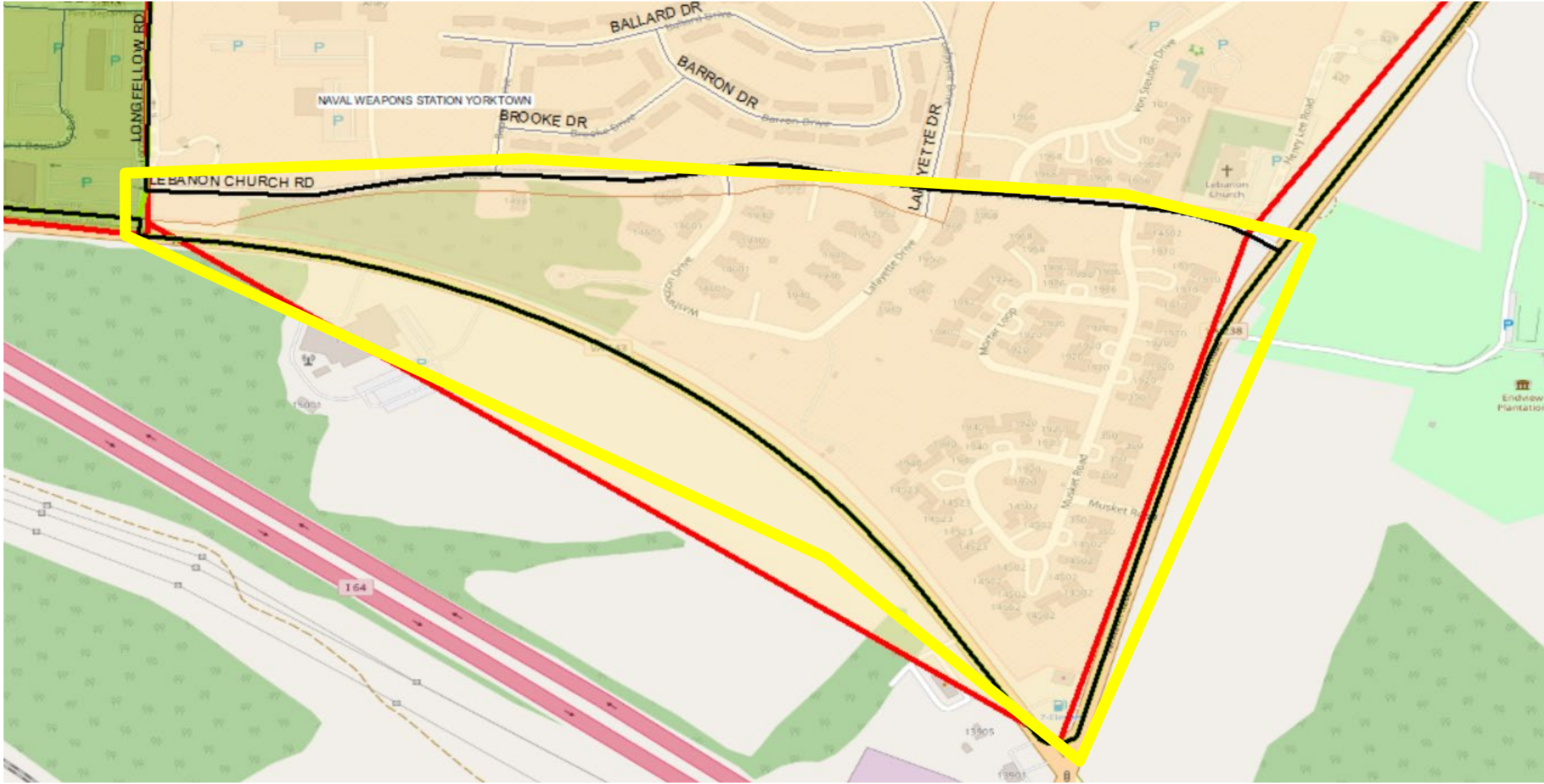
No changes were made to

- Bethel Manor ES
- Coventry ES
- Dare ES
- Grafton Bethel
- Mt. Vernon ES
- Tabb ES

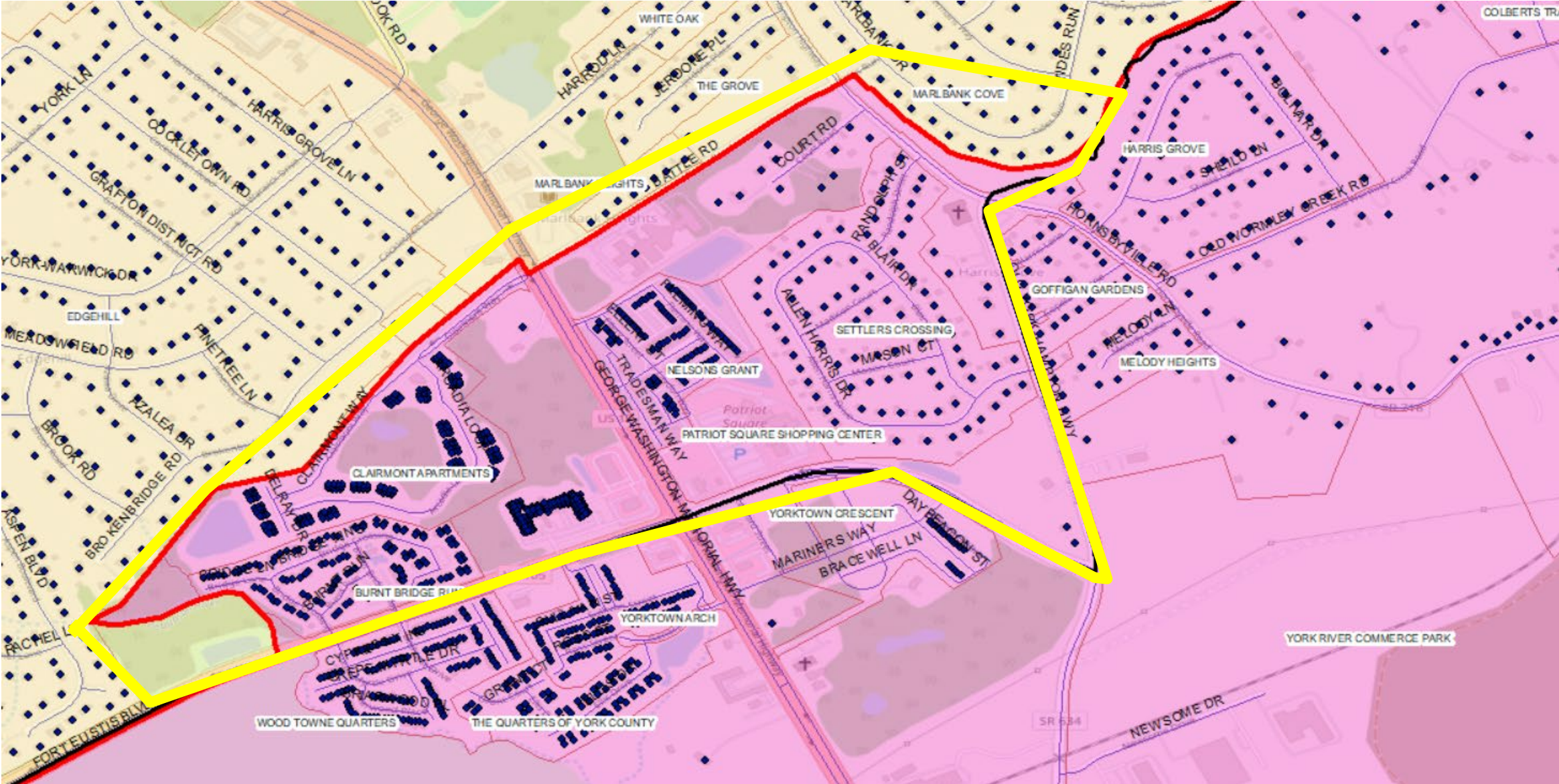
From Magruder ES to Waller Mill ES – Map showing residential addresses and streets



From Magruder ES to Yorktown ES - Map showing streets



From Yorktown ES to Seaford ES - Map showing residential addresses and streets



ES Schools	Planned Capacity	Fall 2023	Open Seats	Utilization %	Disadvantaged %
BMES	720	656	64	91.11%	42.38%
CES	720	663	57	92.08%	28.81%
DES	563	395	168	70.16%	32.66%
GBES	698	645	53	92.41%	29.30%
MES	720	775	-55	107.64%	34.58%
MVES	675	594	81	88.00%	19.87%
SES	630	508	122	80.63%	30.51%
TES	743	657	86	88.43%	26.03%
WMES	540	349	191	64.63%	34.38%
YES	720	651	69	90.42%	47.00%
Total	6729	5893	836		

Utilization & Disadvantaged Status Analysis for Fall 2023

ES Schools	Planned Capacity	Revised Plan E	Open Seats	Utilization %	Disadvantaged %
BMES	720	656	64	91.11%	42.38%
CES	720	663	57	92.08%	28.81%
DES	563	395	168	70.16%	32.66%
GBES	698	645	53	92.41%	29.30%
MES	720	657	63	91.25%	32.57%
MVES	675	594	81	88.00%	19.87%
SES	630	578	52	91.75%	33.22%
TES	743	657	86	88.43%	26.03%
WMES	540	427	113	79.07%	35.60%
YES	720	621	99	86.25%	46.86%
Total	6729	5893	836		

Utilization & Disadvantaged Status Analysis for Revised Plan E